



Janice Tracy, "Our Favorite Tree"

AWARDS

BEST OF SHOW	\$1,500
GOLD MEDAL AWARD	\$1,000
SILVER MEDAL AWARD	\$ 700
BRONZE MEDAL AWARD	\$ 500
AWARD OF DISTINCTION	\$ 300
FOUNDER'S AWARD	\$ 250
PEOPLE'S CHOICE AWARD	\$ 250

In addition, various Merit and Recognition Awards will be announced. Awards will be chosen after the exhibit installation. Both award sponsors and award recipients will be listed in the show catalog.

**EMERALD
ART
CENTER**
art happens here

500 Main Street, Springfield, OR 97477
541-726-8595 www.emeraldartcenter.org

NON PROFIT ORG
US POSTAGE PAID
EUGENE, OR
PERMIT NO. 859

Emerald Spring Exhibition 2019 Painting Competition

Call to Artists

Entry Deadline: March 16th

\$5,000 in Cash Awards

2019 Juror ~ Anji Grainger, "Portland's Party is Coming Out Roses"



2019 Call to Artists

Emerald Art Center's

14th Annual

Spring Exhibition

National Juried

Painting Competition

"Portland's Party is Coming Out Roses" - Takes 1st place at the 2013 Rose Show and received the Peoples Choice Award for their vote of best in show! I was so thrilled and honored that the juror gave me a first place for the theme category in this years Juried Portland Rose Festival show with the Oregon Society of Artists. Very cool. Then was doubly thrilled to also win the people's choice award. I actually was quite surprised because I heard several large groups of people talking about a different painting that they were voting for so when they called my name I wasn't expecting it!" ~ Anji Grainger

NATIONALLY RECOGNIZED JUROR ANJI GRAINGER

Anji is an award winning watercolorist and instructor. Former President of the Watercolor Society of Oregon, member of the Painters Showcase, Lake Area Artists and on the board for the Oregon Society of Artists, her paintings have been awarded five People's Choice Awards for their choice of best in the show. She has also received many additional awards in juried shows including first, third, fourth, Honorable Mentions and Awards of Distinction. In 1984, Anji began painting in acrylic medium and in the 1990s she painted, taught and studied under two acrylic artists. Anji studied in oil in 2002 and 2003 under the direction of Portland oil painter David Selleck. In April and May of 2006 she studied in watercolor at the Scuola Leonardo di Vinci in Florence, Italy, under Patrizio Gervasoni, a contemporary Italian artist. Then in April of 2008 she returned to Europe to study "plein air" techniques in Provence, France under internationally recognized Italian artist, Francesco Fontana, returning again in 2012 to study with him in Sicily, Italy.

Anji's work derives its inspiration from the magic and wonders of nature. She is drawn to see and focus on what might not be seen or noticed. Her drawing instructor, acclaimed Portland artist Gene Flores, helped her understand the importance of not suppressing what comes from within. Anji paints with the movement of nature and visualizes the growing twists and turns of a twig or a leaf. She tries to capture the stillness of an early morning walk in a field, along a river or in a forest. She also focuses on detail whether it's simply the blending or bleeding of two colors like one would see on a ripening peach or the finite lines and edges of a raindrop. Her current explorations are in the discovery of how elements of nature and texture react in watercolor to leave beautiful patterns and surprises.



Juror Anji Grainger in her studio

2019 EMERALD SPRING EXHIBITION



Thomas Pickarsky, "Hills and Caves of Ice"

EXHIBITION CALENDAR

MARCH 16	DEADLINE for entries
MARCH 25	Acceptance/Decline Notification emailed
APRIL 26	DEADLINE to receive shipped artwork
APRIL 26 & 27	INTAKE for hand delivered entries
MAY 1	Exhibition Opens
MAY 3	Juror's Critique & Awards Reception
MAY 10	2nd Friday Art Walk
MAY 31	Exhibition Closes
JUNE 1	Pick up of hand delivered artwork

ELIGIBILITY is open to all U.S. Artists over the age of 18. This exhibition was conceived to recognize, promote and reward excellence in fine art on a national basis.

PAINTING SPECIFICATIONS are as follows:

- Each work of art must be unique, authentic and not copied from any published photo or work of another person. Student work or workshop product is not eligible.
- Diptychs and triptychs must be contained within one frame that meets size requirements.
- All artwork must be **no larger than 42"** on the longest side.
- Submitted artwork must have been created within the last two years.
- Paintings must be for sale and no price change may be made after entries are accepted. Emerald Art Center's (EAC) commission is 35%.
- Artwork must be wired and ready to be hung - no sawtooth hangers accepted.

QUALIFYING MEDIUM includes oil, watercolor, acrylic, encaustic, pastel, or any combination thereof. If two or more mediums are used in creating the artwork, it is considered mixed media and a statement of content, process, technique and execution must be provided. **EXCLUDED** from this painting competition are the following: drawings, photography, digitally or computer-enhanced work, hand-pulled prints, giclées and reproduction prints.



Jan Lucking, "The Bucket of Proof"

ENTRY FEES for 1 or 2 images \$35, 3 images \$45, 4 images \$55. If you are entering only one image, the image must be duplicated for second image. Entry fees are non-refundable. Entry fees may be made online through the CaFÉ™ website with credit card or PayPal, or you may pay via check or money order to Emerald Art Center.



Tracy Wilson, "Demitasse With Roses"

NOTIFICATION OF ACCEPTANCE or non-acceptance will be made via email and not all entries will be accepted into the show. Exhibition space is limited to 60-70 paintings selected at the sole discretion of the juror. Only one piece per artist can be chosen for this show. Awards are selected after the exhibition is installed.

SHIPPING INSTRUCTIONS are included in the acceptance email. Paintings must be returned to an address within the U.S. and all pieces must include a prepaid return shipping label (or make arrangements to email one at show conclusion). A **handling fee** of \$25 for shipped works and \$10 for hand-delivered will be assessed .

LIABILITY of EAC for artwork is limited to the time it is in our possession. Artwork and entry materials are handled with all possible

care during that time. EAC is not responsible for your artwork while in transit (either by you or your designee, or shipped to/from us). Insurance, if desired, must be carried by the artist.

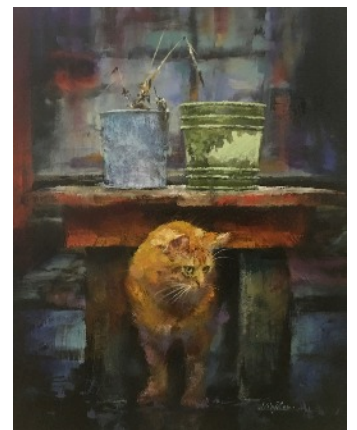
QUESTIONS concerning eligibility must be emailed to the event chairman, Merrilea Jones at freyal955@comcast.net . Please refer to the CaFÉ™ website detailed information on how to prepare digital images (www.callforentry.org/image_prep.phtm). For technical support, contact cafe@westaf.org Monday - Friday, 8:30 am - 5 pm MST.

EMERALD ART CENTER 541-726-8595 www.emeraldartcenter.org

ENTRY PROCEDURE - ONLINE ENTRY ONLY

Artists may submit up to 4 images for consideration. Preliminary choices are made from digital images; awards are selected after the show is hung.

Applications are accepted online through CaFÉ™ website www.callforentry.org and must be received prior to midnight (11:59:59 pm) Mountain Standard Time, **March 16, 2019**. In order to apply, you must register and upload your images to create a personal portfolio. There is no fee associated with the creation of a portfolio on CaFÉ™.



Jerry Dame, "Work Bench"